

Step-by-Step Guest Wi-Fi Access Instructions

Select the appropriate instructions to connect to PHINIA's guest Wi-Fi:

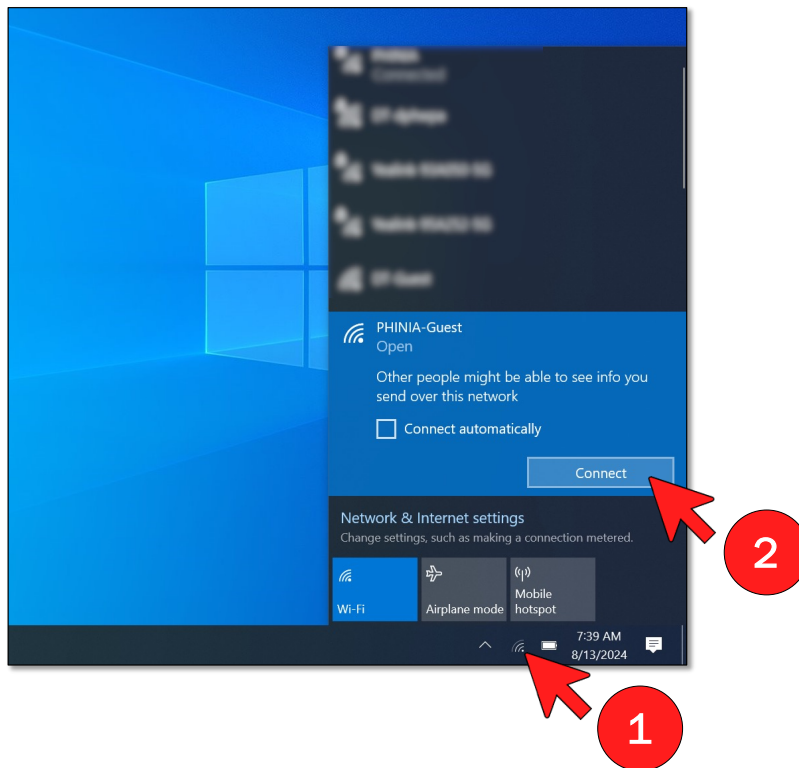
- For PCs: [Steps to Connect Your PC](#)
- For Mobile Devices: [Steps to Connect Your Mobile Device](#)

Troubleshooting: If you are having trouble connecting, please contact the local IT support team.

Steps to Connect Your PC

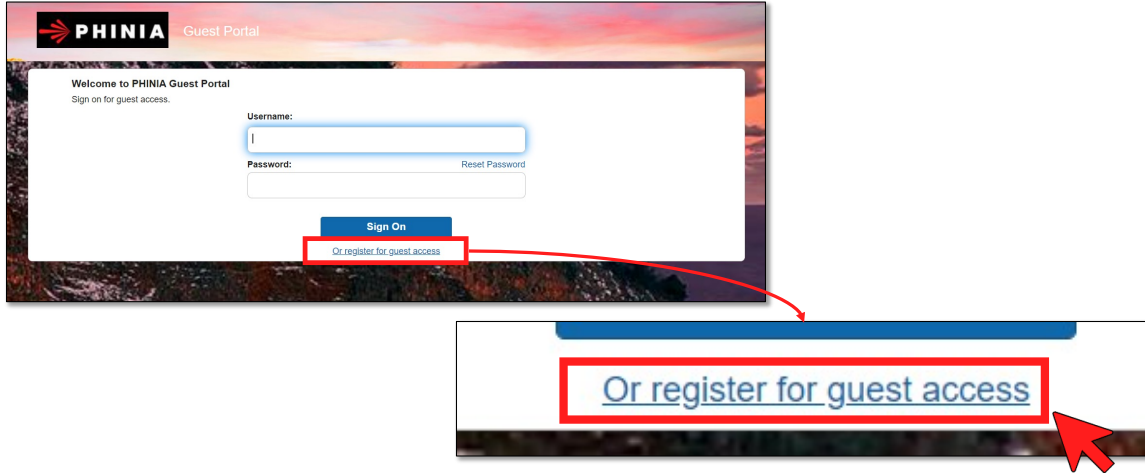
1. Connect to the PHINIA Guest Wi-Fi Network

- Click the Wi-Fi icon on your taskbar.
- Select the Wi-Fi network named “PHINIA-Guest.”



2. Wait for the Portal Page to Open

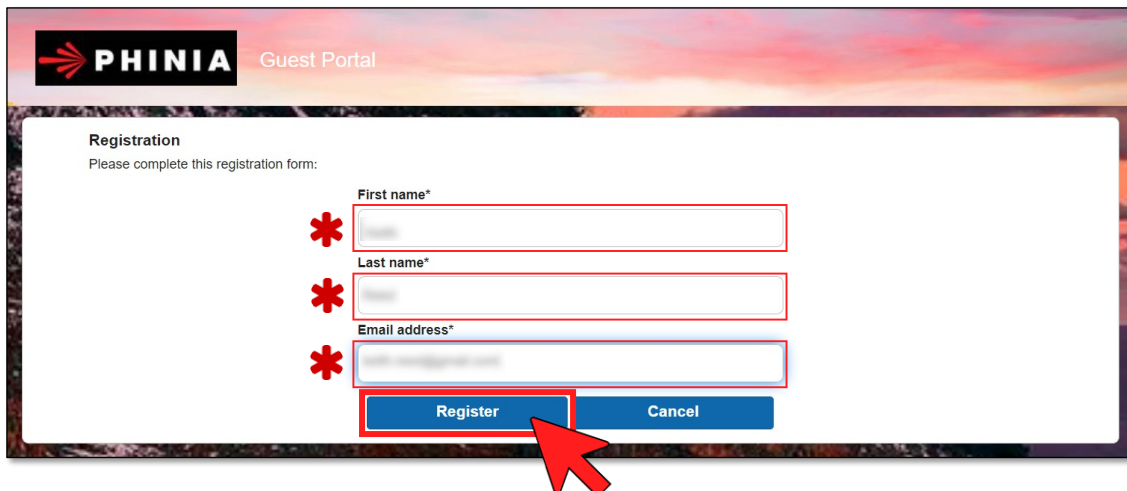
- Wait for the PHINIA Guest Portal to open automatically.
- At the bottom of the page, click the link titled “Or register for guest access.”



NOTE: If the portal page does not open, try disconnecting and reconnecting to the “PHINIA-Guest” network. If you still encounter issues, please contact the local IT support team for assistance.

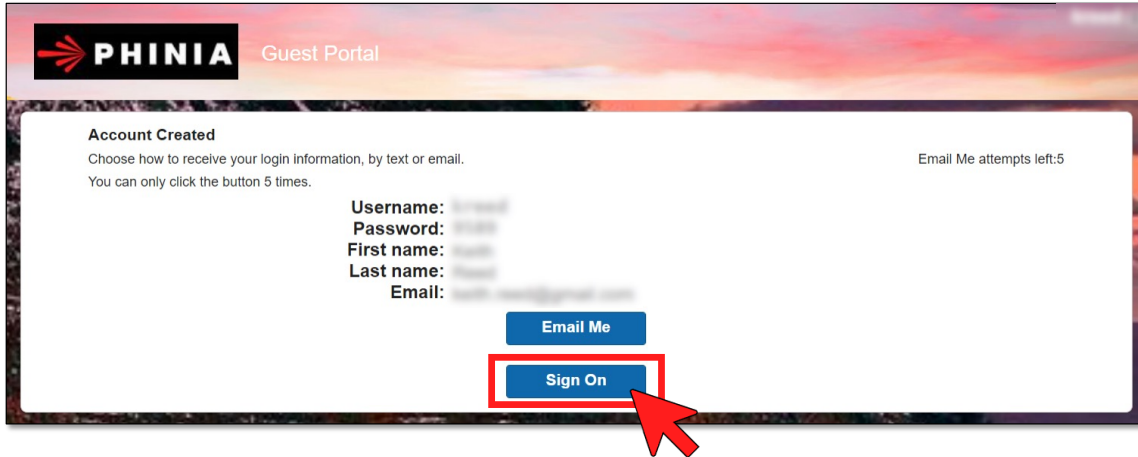
3. Complete Registration

- On the registration page, enter your first name, last name, and email address.
- Click “Register.”



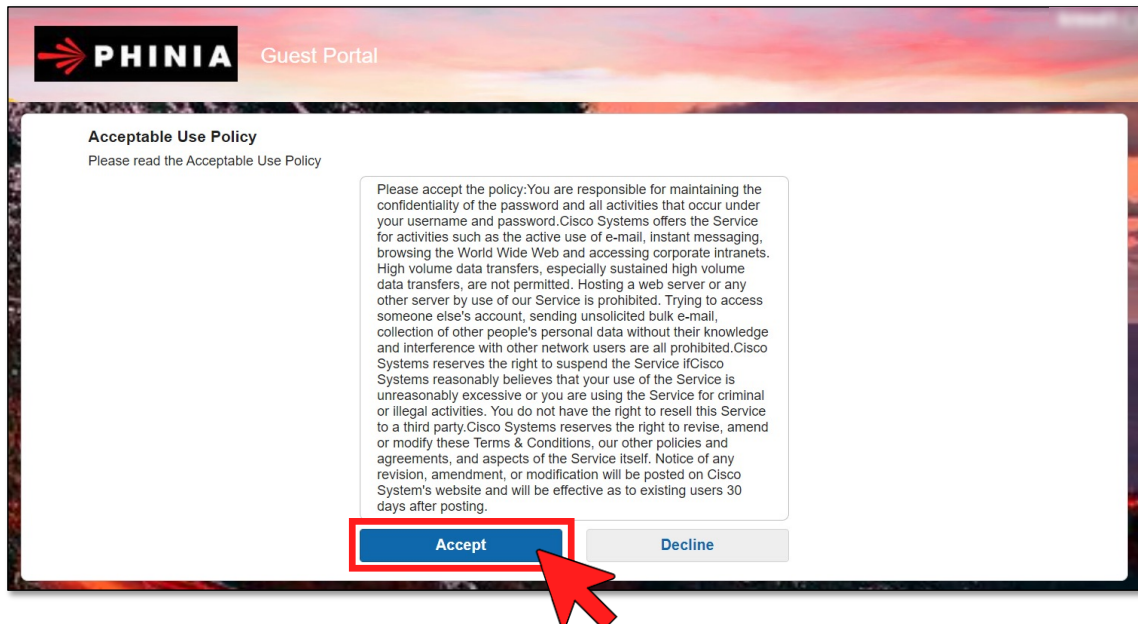
4. Account Creation

- After your account is created, click “Sign On.”
- Your Guest Wi-Fi credentials will display. If you wish, click “Email Me” to receive them via email.



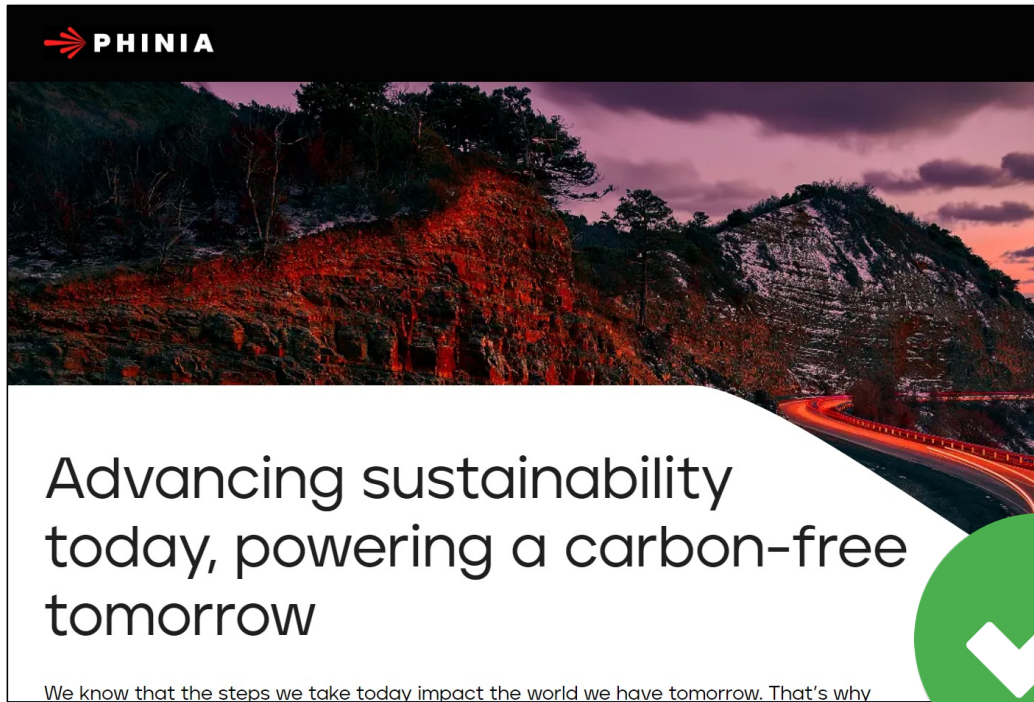
5. Agree to the Acceptable Use Policy

- Read through the Acceptable Use Policy.
- Click “Accept.”



6. Connection Successful

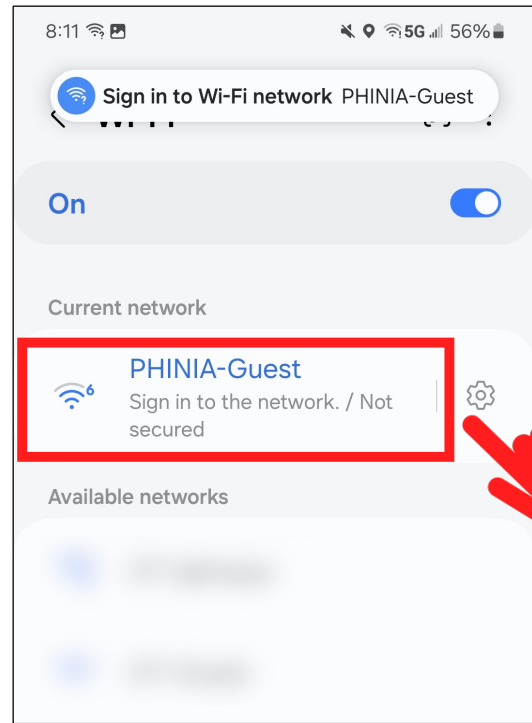
- You will see the PHINIA homepage, confirming your connection is successful.
- You can now browse the internet using PHINIA's Guest Wi-Fi.



Steps to Connect Your Mobile Device

1. Connect to the PHINIA Guest Wi-Fi Network

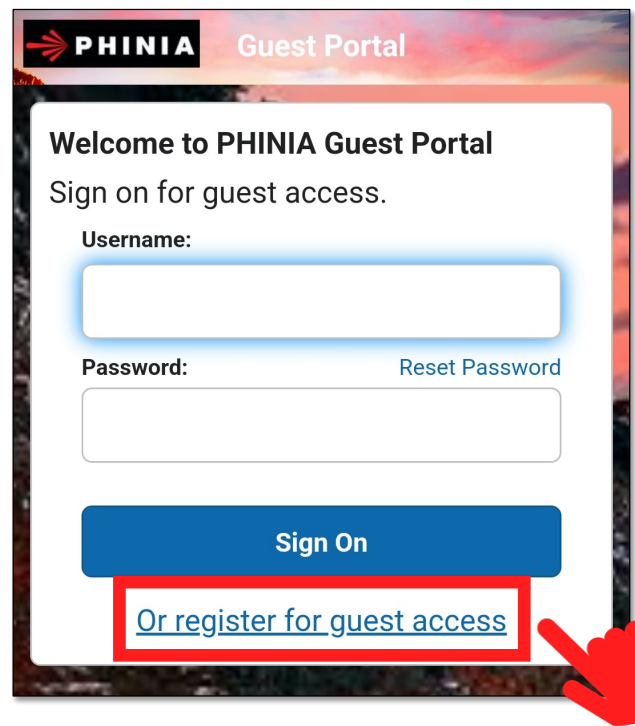
- Open your mobile device's settings and go to the Wi-Fi section.
- Select the Wi-Fi network named “PHINIA-Guest.”



2. Wait for the Portal Page to Open

- Wait for the PHINIA Guest Portal to open automatically.
- At the bottom of the page, tap the link titled “Or register for guest access.”

NOTE: If the portal page does not open, try disconnecting and reconnecting to the “PHINIA-Guest” network. If you still encounter issues, please contact the local IT support team for assistance.



3. Complete Registration

- On the registration page, enter your first name, last name, and email address.
- Tap “Register.”

PHINIA Guest Portal

Registration

Please complete this registration form:

First name*

Last name*

Email address*

Register

Cancel

4. Account Creation

- After your account is created, tap “Sign On.”
- Your Guest Wi-Fi credentials will display. If you wish, tap “Email Me” to receive them via email.

PHINIA Guest Portal

Account Created

Choose how to receive your login information, by text or email.

Email Me attempts left: 5

You can only click the button 5 times.

Username:

Password:

First name:

Last name:

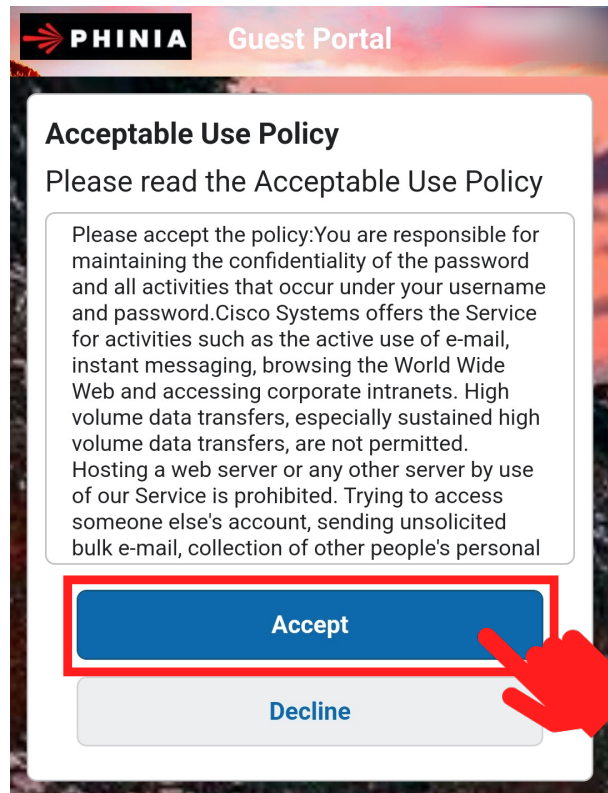
Email:

Email Me

Sign On

5. Agree to the Acceptable Use Policy

- Read through the Acceptable Use Policy.
- Tap “Accept.”



6. Connection Successful

- Your device should now show that you are connected to the PHINIA-Guest network.
- You can now browse the internet using PHINIA's Guest Wi-Fi.

